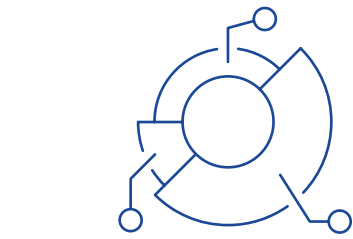


Feature Story

Collaborating across the Entire Value Chain

At Kerry Properties, we understand that sustainability is a responsibility we all share that extends beyond our day-to-day operations. By fostering stronger partnerships across the entire value chain, we tackle the shared challenges and navigate the journey towards a more sustainable future together.



▲ 20 %

Number of carbon audits conducted to tenants

Empowering Tenants to Mitigate Climate Impact

Recognising that tenant activities contribute significantly to our downstream emissions, the Tenant Carbon Audit Programme was launched to offer tenants free carbon audits. The Programme has improved tenants' understanding of emissions attributed to their operations, enhancing data accuracy and transparency, which in turn has supported enhancement of their sustainability performance. This year, we welcomed 20 new tenant participants. In response to the growing demand, we are planning to expand the programme in the coming year.

In 2023, a mutually beneficial Dark Green Leasing Programme was introduced for our office tenants in Hong Kong Enterprise Square Five. This year, we have doubled the number of participants in the programme. Tenants who demonstrate meaningful improvements in carbon reduction, energy efficiency, and environmental performance within our permits are offered additional incentives. Through such collaborative efforts, we can build a stronger partnership and drive mutual progress towards achieving carbon neutrality.

“It is our pleasure to join the carbon audit programme provided by Kerry Properties, as a commitment to carbon reduction and green finance. We are glad to work together with Kerry Properties for a more sustainable future.”

China Resources SZITIC Trust Co.Ltd, one of our tenants

Educating Suppliers to Enhance ESG Performance



Our KPL Sustainability Education Programme aims to engage suppliers and contractors who support projects during construction and keep our properties operating seamlessly through daily operations and maintenance. With the support of all teams across our portfolio, the Programme was offered to all our suppliers and contractors with a 25% participation rate.

The programme was offered across **ALL** of our supply chain

The ten episodes of the programme started in 2024 and covered a range of ESG topics. The initial six episodes addressed key topics such as carbon emissions, carbon neutrality, renewable energy, carbon tax and carbon trading, green building and biodiversity. The Programme showcases our dedication to addressing emerging sustainability challenges and equipping our partners with forward-looking knowledge and practical tools. From 2025, we will broaden the coverage to a wider group of stakeholders by disseminating these comprehensive materials through the Kerry Living app.

“We appreciate Kerry Properties' active promotion of green building practices in recent years. It is encouraging to see a leading organisation in the real estate sector taking significant steps towards sustainability.”

Schneider Electric, one of our suppliers

Introducing Supplier Low Carbon Stewardship Scheme

Achieving our carbon reduction targets hinges on close collaboration with our supply chain partners. Through the Supplier Low Carbon Stewardship Scheme, we engaged our value chain with workshops, seminars, e-learning and free carbon audits. In addition, we collaborated with our major suppliers to collect and analyse their carbon emissions data, identify emission hotspots, and thereby support them in reducing their emissions. The Scheme enhances our understanding and transparency of Scope 3 emissions across our supply chain. In 2024, we engaged 20% of key property management suppliers in Hong Kong.



100 %

Our stakeholder groups along value chain are engaged to promote ESG practices

